

SONATE DA CHIESA

a Violino Solo e Violoncello o Basso Continuo

AMSTERDAM 1708

TOMASO ALBINONI

1671 – 1750

Published by Johan Tufvesson.

Non-commercial copying welcome

Revision : 1.1

Violino

Sonata I

Tomaso Albinoni (1671–1750)

Adagio

8

13

18

24

30

36

p

Allegro

4

6

8

Musical score for Sonata I Violino, measures 11-30. The score is written in treble clef, 3/4 time signature, and B-flat major. It features a complex, rhythmic melody with many sixteenth and thirty-second notes. The dynamics include *p* (piano) at measures 16 and 28. The piece concludes with a double bar line and a final chord at measure 30.

Largo

Musical score for the Largo section, measures 1-11. The score is written in treble clef, 3/2 time signature, and B-flat major. It features a slow, melodic line with long intervals and a simple harmonic accompaniment. The piece concludes with a double bar line at measure 11.

Allegro

Sonata I Violino

4

7

10

13

17

20

23

25

28

31

p

p

This page intentionally left blank.

Sonata II

Tomaso Albinoni (1671-1750)

Adagio

Musical score for the Adagio section of Sonata II by Tomaso Albinoni. The score is written for violin in G major and 3/2 time. It consists of nine staves of music, with measure numbers 6, 11, 15, 19, 24, 29, 33, and 37 indicated at the beginning of each staff. The music features a slow, melodic line with various ornaments and phrasing.

Allegro

Musical score for the Allegro section of Sonata II by Tomaso Albinoni. The score is written for violin in G major and common time (C). It consists of two staves of music, with measure numbers 4 and 8 indicated at the beginning of each staff. The music is characterized by a fast, rhythmic pattern with many sixteenth notes.

Sonata II Violino

Musical score for Sonata II Violino, measures 6-28. The score is written in treble clef with a key signature of one sharp (F#). The tempo is marked *p* (piano). The music features a complex rhythmic pattern with many sixteenth and thirty-second notes, often beamed together. There are several rests and dynamic markings throughout the passage.

Largo

Musical score for Sonata II Violino, measures 29-32. The tempo is marked *Largo*. The score is written in treble clef with a key signature of one sharp (F#). The music is slower and more melodic, featuring a mix of quarter, eighth, and sixteenth notes with some rests.

8

4

7

10

13

16

19

22

25

28

32

35

p

p

This page intentionally left blank.

Violino

Sonata III

Tomaso Albinoni (1671-1750)

Largo

Musical score for the Largo section of Sonata III by Tomaso Albinoni. The score is written in treble clef, common time (C), and B-flat major. It consists of four staves of music. The first staff begins with a whole note G4, followed by a half note F4, and then a series of eighth notes: G4, A4, Bb4, A4, G4, F4, E4, D4, C4. The second staff starts at measure 4 with eighth notes: D4, C4, Bb4, A4, G4, F4, E4, D4, C4, Bb4, A4, G4, F4, E4, D4, C4. The third staff starts at measure 7 with eighth notes: D4, C4, Bb4, A4, G4, F4, E4, D4, C4, Bb4, A4, G4, F4, E4, D4, C4. The fourth staff starts at measure 10 with eighth notes: D4, C4, Bb4, A4, G4, F4, E4, D4, C4, Bb4, A4, G4, F4, E4, D4, C4. The piece ends with a double bar line and a fermata over the final note.

Allegro

Musical score for the Allegro section of Sonata III by Tomaso Albinoni. The score is written in treble clef, common time (C), and B-flat major. It consists of four staves of music. The first staff begins with a quarter note G4, followed by a series of eighth notes: A4, Bb4, A4, G4, F4, E4, D4, C4. The second staff starts at measure 3 with eighth notes: D4, C4, Bb4, A4, G4, F4, E4, D4, C4, Bb4, A4, G4, F4, E4, D4, C4. The third staff starts at measure 5 with eighth notes: D4, C4, Bb4, A4, G4, F4, E4, D4, C4, Bb4, A4, G4, F4, E4, D4, C4. The fourth staff starts at measure 7 with eighth notes: D4, C4, Bb4, A4, G4, F4, E4, D4, C4, Bb4, A4, G4, F4, E4, D4, C4. The fifth staff starts at measure 9 with eighth notes: D4, C4, Bb4, A4, G4, F4, E4, D4, C4, Bb4, A4, G4, F4, E4, D4, C4. The piece ends with a double bar line and a fermata over the final note.

Musical score for Sonata III Violino, measures 12-20. The score is written in treble clef with a key signature of one flat (B-flat). The tempo is marked as Adagio. The music features a series of eighth and sixteenth notes, with some rests and dynamic markings. A *p* (piano) marking is present at measure 20.

Adagio

Musical score for Sonata III Violino, measures 1-25. The score is written in treble clef with a key signature of one flat (B-flat). The tempo is marked as Adagio. The music features a series of eighth and sixteenth notes, with some rests and dynamic markings. A *p* (piano) marking is present at measure 20.

3

6

9

11

13

16

18

21

p

23

This page intentionally left blank.

Violino

Sonata IV

Tomaso Albinoni (1671-1750)

Adagio

The Adagio section is written in G minor, common time (C), and consists of 15 measures. The notation is on a single treble clef staff. It begins with a half rest followed by a quarter note G4, then a quarter note F4, and a quarter note E4. The melody continues with eighth and sixteenth notes, featuring a chromatic descent from G4 to E4. The piece concludes with a whole note G4.

Allegro

The Allegro section is written in G minor, common time (C), and consists of 8 measures. The notation is on a single treble clef staff. It begins with a half rest followed by a quarter note G4, then a quarter note F4, and a quarter note E4. The melody is characterized by a constant eighth-note accompaniment in the right hand and a more active melodic line in the left hand. The piece concludes with a whole note G4.

10

12

15

17

19

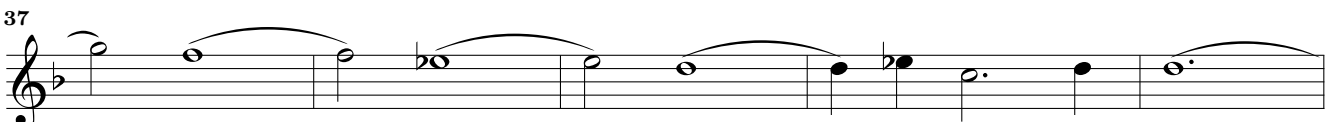
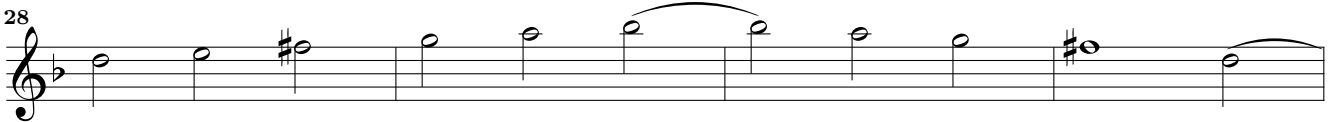
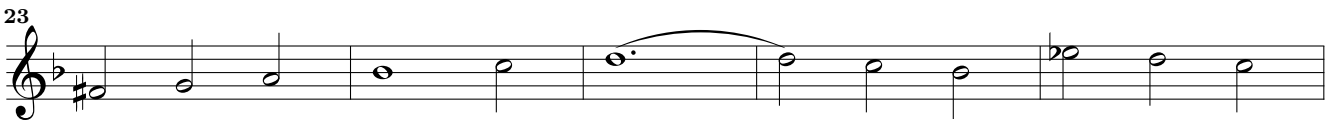
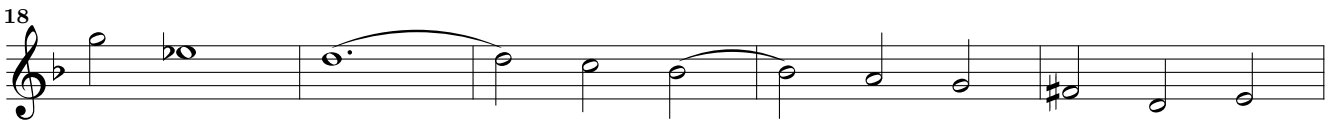
21

23

25

27

29



Allegro

Sonata IV Violino

3

5

7

10

12

14

17

19

This page intentionally left blank.

Violino

Sonata V

Adagio

Tomaso Albinoni (1671-1750)

7

12

17

21

25

29

34

38

42

3

5

7

9

11

13

15

17

20

22

24

26

Musical score for Sonata V, Violino, measures 29-41. The score is written in treble clef with a key signature of one flat (B-flat). The tempo is marked Adagio. The music features a complex rhythmic pattern with many sixteenth and thirty-second notes, often beamed together. There are several slurs and accents throughout the passage. Measure 41 ends with a double bar line and a repeat sign.

Adagio

Musical score for Sonata V, Violino, measures 3-32. The score is written in treble clef with a key signature of one flat (B-flat). The tempo is marked Adagio. The music is in 3/4 time and features a slower, more melodic line with many slurs and accents. There are several dynamic markings, including a piano (p) marking in measure 22. Measure 32 ends with a double bar line.

Musical score for Violino, Sonata V, Presto, measures 1-32. The score is written in treble clef, 3/4 time, and B-flat major. It features a series of eighth-note patterns, often beamed in pairs or groups of four, with various articulations and dynamics. The piece concludes with a double bar line and repeat dots at measure 32.

36

39

42

45

48

51

54

57

60

63

The image displays a musical score for the Violino part of Sonata V, measures 36 through 63. The score is written on ten staves, each beginning with a measure number. The key signature is one flat (B-flat), and the time signature is 4/4. The music consists of a continuous stream of eighth and sixteenth notes, often grouped into beamed pairs or triplets. Many notes are slurred together, and there are frequent ties between notes across bar lines. The piece concludes with a double bar line at measure 63, followed by a final cadence consisting of a whole note chord (F major) and a whole rest.

Violino

Sonata VI

Tomaso Albinoni (1671-1750)

Largo

Musical score for the Largo section of Sonata VI by Tomaso Albinoni. The score is written in treble clef, G major, and common time (C). It consists of six staves of music. The first staff begins with a treble clef, a key signature of one sharp (F#), and a common time signature (C). The tempo is marked 'Largo'. The music features a series of eighth and sixteenth notes, often beamed together, with some rests and slurs. The second staff starts with a measure rest and a triplet of eighth notes. The third staff continues the melodic line. The fourth staff has a measure rest. The fifth staff has a measure rest. The sixth staff ends with a double bar line and a dynamic marking of *p* (piano).

Allegro

Musical score for the Allegro section of Sonata VI by Tomaso Albinoni. The score is written in treble clef, G major, and common time (C). It consists of five staves of music. The first staff begins with a treble clef, a key signature of one sharp (F#), and a common time signature (C). The tempo is marked 'Allegro'. The music is characterized by a fast, rhythmic pattern of eighth and sixteenth notes, often beamed together. The second staff starts with a measure rest. The third staff continues the melodic line. The fourth staff has a measure rest. The fifth staff ends with a double bar line.

13

16

18

20

23

26

29

31

34

36

39

Adagio

Sonata VI Violino

Musical score for Adagio, measures 1-21. The score is written in treble clef, key of D major (one sharp), and 3/8 time. It consists of five staves of music. The first staff starts with a treble clef, a key signature of one sharp (F#), and a 3/8 time signature. The music features a series of eighth and quarter notes, with some slurs and accents. The second staff begins at measure 6. The third staff begins at measure 11. The fourth staff begins at measure 16. The fifth staff begins at measure 21 and ends with a double bar line.

Allegro

Musical score for Allegro, measures 1-20. The score is written in treble clef, key of D major (one sharp), and 12/8 time. It consists of eight staves of music. The first staff starts with a treble clef, a key signature of one sharp (F#), and a 12/8 time signature. The music features a series of eighth and quarter notes, with some slurs and accents. The second staff begins at measure 3. The third staff begins at measure 5. The fourth staff begins at measure 8. The fifth staff begins at measure 11. The sixth staff begins at measure 14. The seventh staff begins at measure 17 and includes a *p* (piano) dynamic marking. The eighth staff begins at measure 20 and ends with a double bar line.